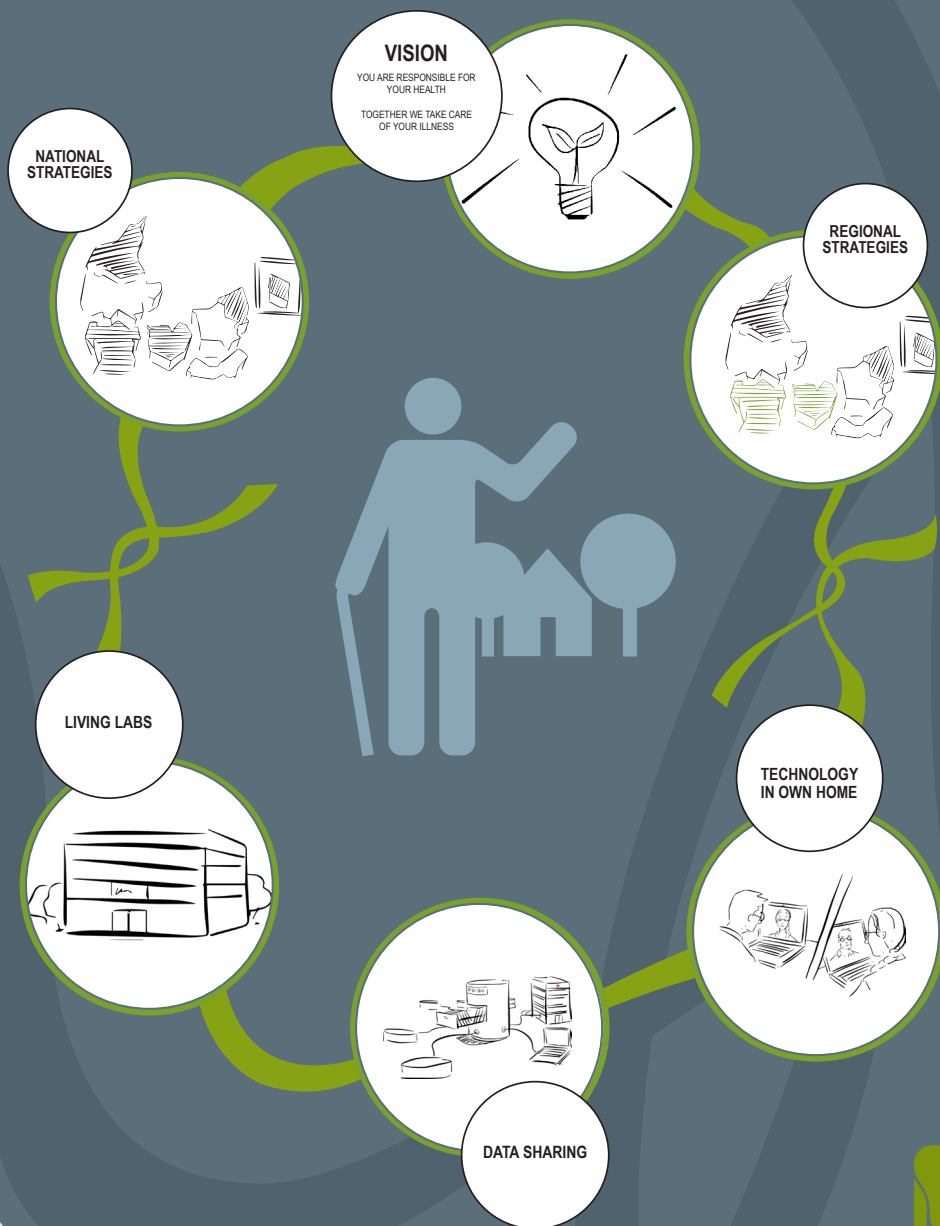


# PLACING CITIZENS IN THE CENTRE OF HEALTH CARE



# PLACING CITIZENS IN THE CENTRE OF POLICIES

---

## THE REGION OF SOUTHERN DENMARK

With 1.2 million citizens in the Region of Southern Denmark, the region is experiencing an increase in the number of elderly citizens with chronic conditions.

These demographic changes require a new way of providing care for the citizens, empowering and involving them in their own care. The national policies ensure coherence when treating patients with chronic conditions and support them in their daily lives. These policies have influenced the regional strategies and action plans.

Whereas the National Strategy for Digitalization of the Health Care Sector 2013-2017 focuses on creating

coherence across health and social care sectors and ensures individualized treatment.

The Public Strategy for Digital Assisted Living 2013-2020 focuses on creating a better foundation for standardisation of effective digital assisted living solutions.

This is assisted by the National Action Plan from 2012 that focuses on the nationwide implementation and evaluation of telemedicine.

The Region of Southern Denmark has on the basis on these created Regional Health Agreements 2015-2018 that ensures integrated and improved care for the patients in the region. These are implemented in daily workflows between health and social care providers as they focus on cross-sector collaboration and on the ICT support of this to empower citizens.

# PROGRAMMES AND PROJECTS

## PLACING CITIZENS IN THE CENTRE OF PROGRAMMES AND PROJECTS

---

### TECHNOLOGY IN OWN HOME

TeleHealth and TeleCare solutions have become increasingly important when caring for citizens in the Region of Southern Denmark. Today, all hospitals in the region are using innovative solutions to improve and support treatment and workflow in various departments and processes. Telemedicine solutions are being used for various tasks such as multidisciplinary video conferencing to plan complex procedure across hospital units, video interpretation with external translators, and various patient groups are receiving medical consultations and check-ups in their own home using technology.

### LIVING LABS

Living Labs in the Region of Southern Denmark focus on

user-centred ecosystems integrating current research and innovation processes within a public-private partnership.

CoLab Denmark is an example of how these living labs support tests that primarily focus on everyday life and create value across the health and care sector in collaboration with local stakeholders.

### DATA SHARING

The Region has an increasing focus on initiatives related to data sharing across sectors. To support integrated care for the citizen it is crucial to share data and information between sectors. The Shared Care Platform is one of the projects that embrace this initiative as the platform is a generic ICT platform that ensures data sharing between health and social care sectors and the citizen.



EU projects co-funded by



## CONTACT

[www.syddanksundhedsinnovation.dk](http://www.syddanksundhedsinnovation.dk)

Christina E. Wanscher  
cew@rsyd.dk

